

# Developer Tips You (May) Already Know About But it's Good To Be Reminded of Every Once In a While

Jess Stratton, Solace  
Lotus Notes/Domino Developer/Admin

# Who am I and where did I get these tips?

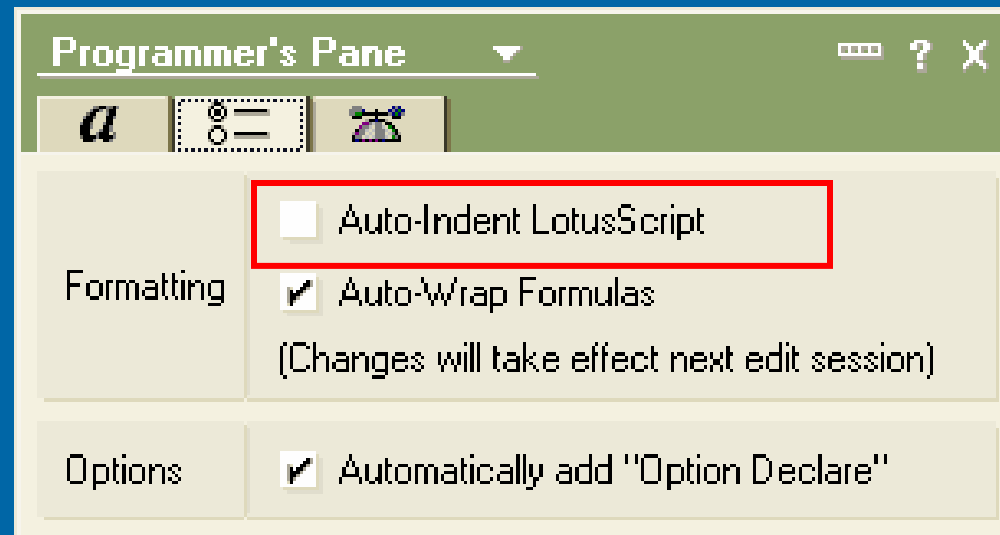
- I am co-editor of the LotusUserGroup.org's Developer Tips newsletter, have been published in various technical magazines, books, columns, and am a professional trade speaker.
- I am a developer AND an admin.
- You can reach me at [jess.42@gmail.com](mailto:jess.42@gmail.com) or at my blog(s)
  - Mattandjess.net – as you wish
  - [www.lotususergroup.org/blogsphe.nsf](http://www.lotususergroup.org/blogsphe.nsf)
- I got these from the Help File, my own frustrations, Google searches, blogs, Lotusphere sessions, flights of fancies, and moments when I did a big fat “oops.”

# 1. Have the Developer client startup with Notes!

- PRE-Notes 8:
  - Drag the Designer icon from the bookmark bar to the “More Bookmarks→Startup” folder.
- Notes 8:
  - RIGHT-click Domino Designer in the “Open” menu, and choose “Add to Startup”.

## 2. Deselect “Auto-Indent” Lotuscript

- By deselecting this, you LOSE the ability to auto-indent your small code phrases (If..then...else...while...wend)
- BUT...
- You GAIN the ability to highlight an entire block of code and MASS indent it all at once!



# Auto-indent (cont.)

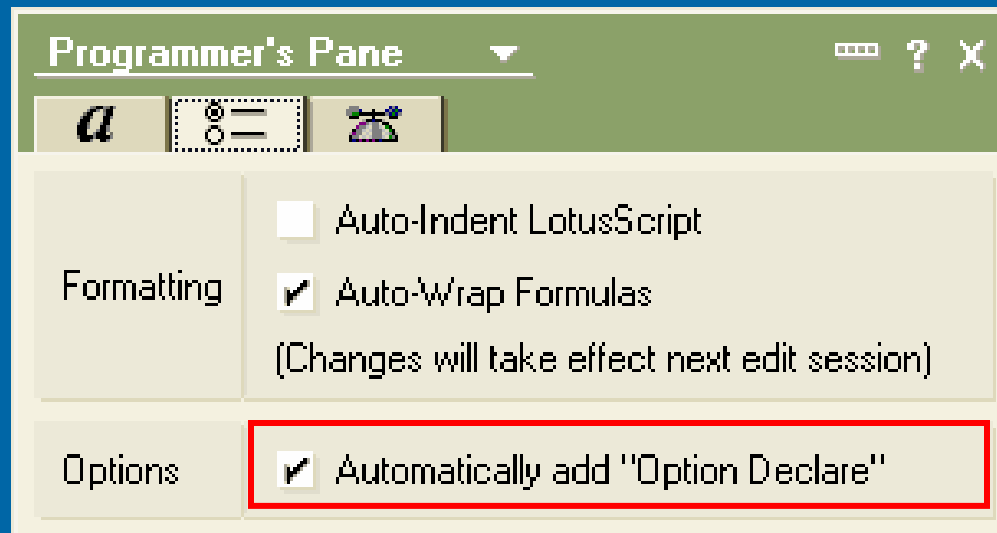
- Because who hasn't highlighted a whole chunk of code, hit the Tab key (expecting it to mass-indent) and watched the ENTIRE THING DISAPPEAR???

**CTRL-Z! CTRL-Z!!**

**Quick, Quick!!!**

# 3. Automatically add “Option Declare”

- Don't even question it. Just do it!



# 4. When printing code, take advantage of the Object/Language selection!

**Printer**

Name: \\westerly\hp deskjet 920c series  
Status: Ready  
Type: hp deskjet 920c series (on USB)  
Comment:  
Location:

**What to Print**

Source: All objects

Language: Current section  
Current object  
All objects

**Print Range**

All pages  
 From page  to

**Printer**

Name: \\westerly\hp deskjet 920c series  
Status: Ready  
Type: hp deskjet 920c series (on USB001)  
Comment:  
Location:

**What to Print**

Source: All objects

Language: All languages  
Current language

**Print Range**

All pages  
 From page  to

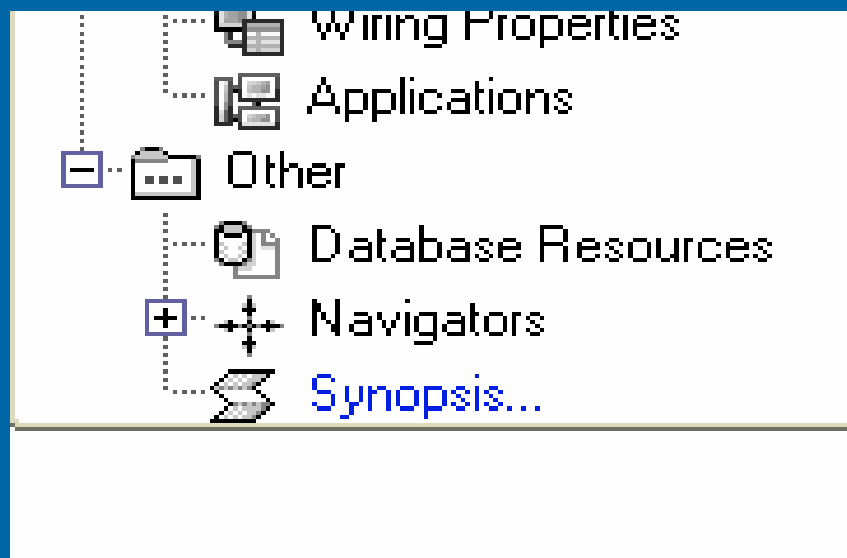
# (cont) Printing

- One warning – If printing All Objects, All Languages, be prepared to have LOTS of paper in your printer!

# 5. Or, use Design Synopsis

It will spit out every piece of information that you could possibly need about your database!

This is quite possibly one of the most underutilized Designer features.



## 6. Group your design elements in folders!

- In Designer, make sure your db is on the bookmark bar.
- Create a new folder, but select your database instead of the bookmark bar!
- Now you can drag design elements to the folder!
  
- This is GREAT for plowing through categorized design elements, such as web-only.
  
- This tip came from Alan Lepofsky. He describes it WAY better than I can here:

<http://alanlepofsky.net/alepofsky/alanblog.nsf/dx/folder-of-design-elements>

# 7. Common names and Readers fields

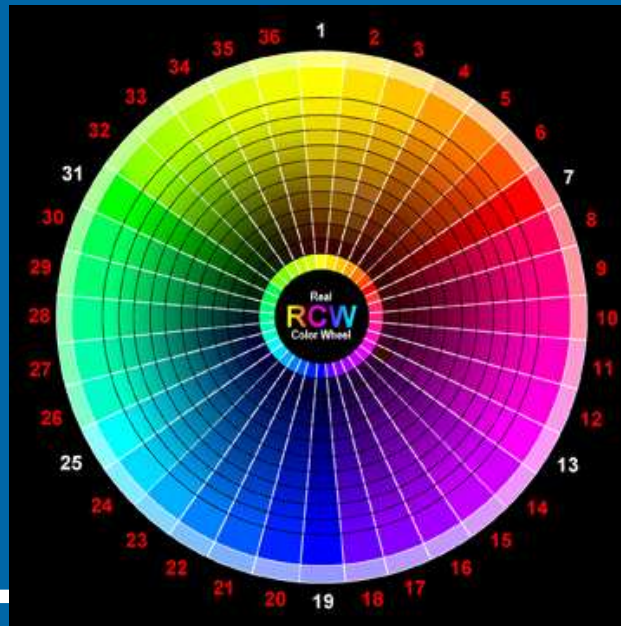
- Friends don't let friends use common names with Readers fields!
- It might work, it might not. It may work one day, and then for some unknown reason, never work again. It's not supported, so It's a false sense of security!
- If you absolutely must use common names, then have another computed hidden field containing the full hierarchical name and set THAT as readers.

## 8. Do you really need that secondary sort view column?

- Each sorted column is like maintaining a whole separate view index. When you click on a column header to sort it, the entire view needs to re-arrange itself, and thus a new view index needs to be created.
- When you add a secondary sort to the column, it exponentially increases the view index rearranging!

# 9. Use a color wheel for aesthetics

- This is especially useful when asked to create an application and only given a logo to work with...
- It's formulaic, and foolproof!
- This is one example of a color wheel. A Google Image Search will yield hundreds, each with their own color range!

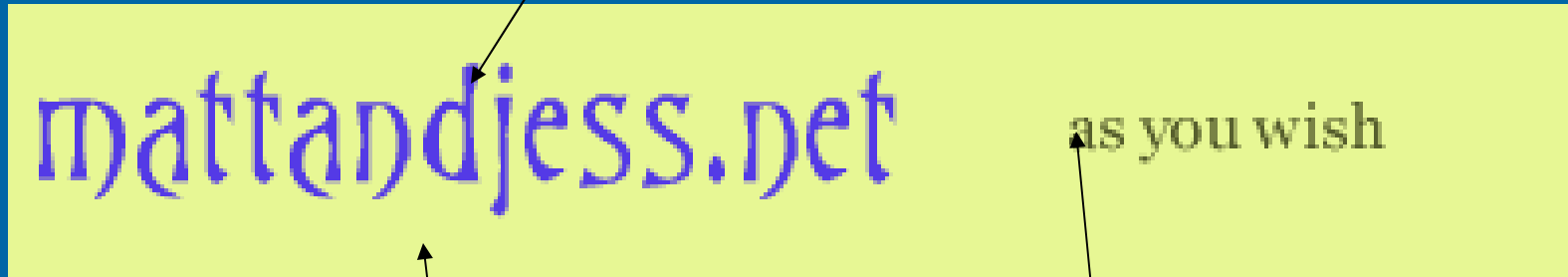


# How The Color Wheel Works

- Choose one color as a starting color and find it on the wheel.
- For complimentary colors (backgrounds, etc.) choose two or three colors in any direction away from your starting color.
- For a contrasting color (links, sidebars, etc.), use the color directly OPPOSITE the base color on the wheel.

# The Color Wheel In Action...

Contrasting color (purpley-blue, the exact opposite of the lime green)



Starting color (lime green)

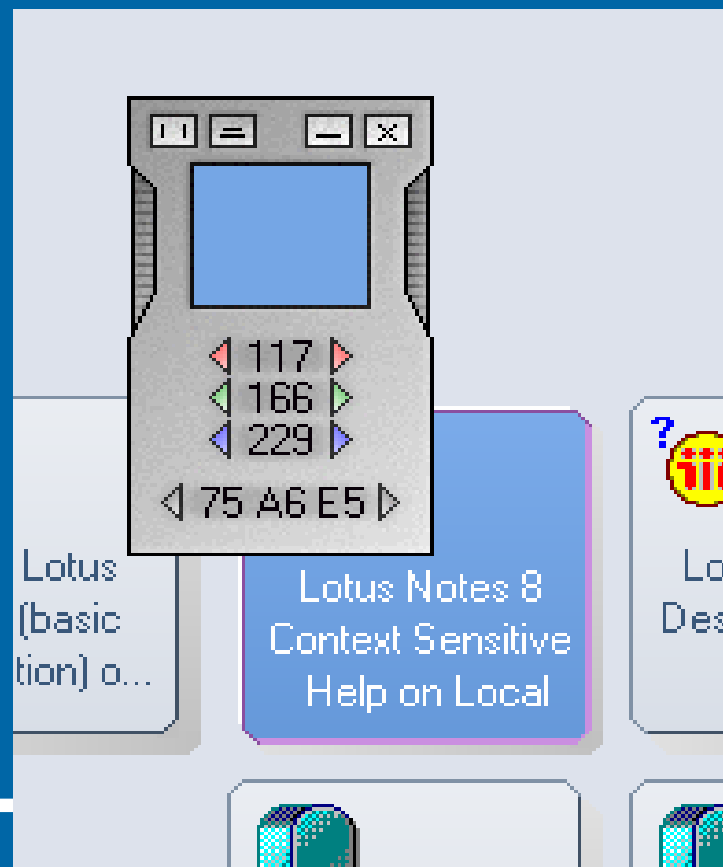
Complimentary color (dark green, a few shades from the lime green)

# 10. Use an RGB Color picker for precise color matching

- I like ColorPad (do a Google search).
- The app stays on the screen and lets you drag the mouse over ANY pixel on the screen.
- It will give you the RGB or hex values of ANY pixel you can see on your screen!
- Drag the mouse onto a logo, background, font, anything! This is where you can get your starting color for the color wheel.

# Colorpad

The mouse is dragged onto the selected database to get the RGB and Hex value of the “selected” color.



# 11. Use Sizer to simulate screen resolutions.

- If you develop for a browser, you can't afford to live without this app!
- <http://www.brianapps.net/sizer.html>
- Sizer simulates screen resolutions, and what will be seen at each resolution.